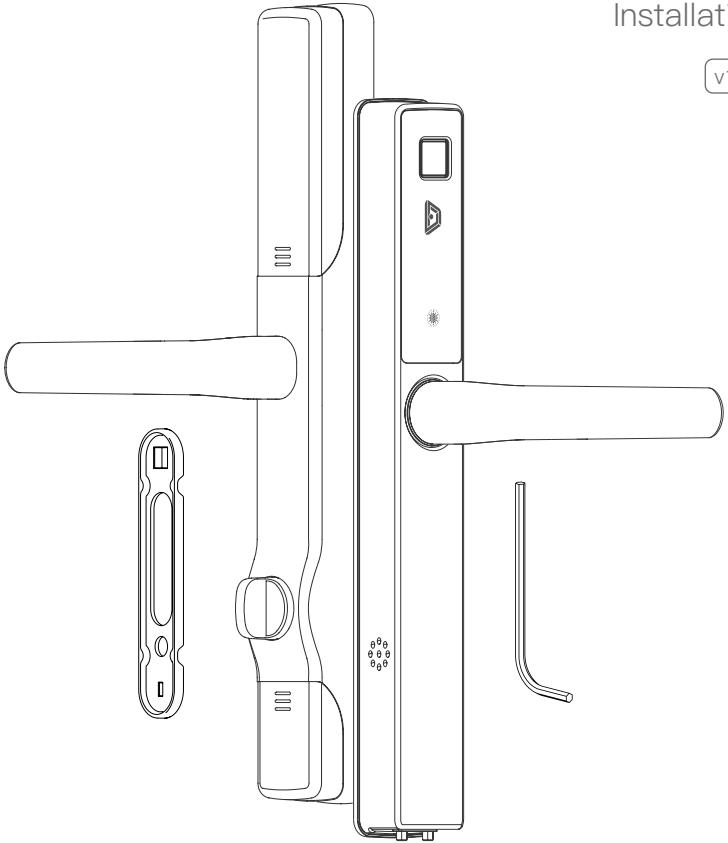


# Blusafe Origin Smart

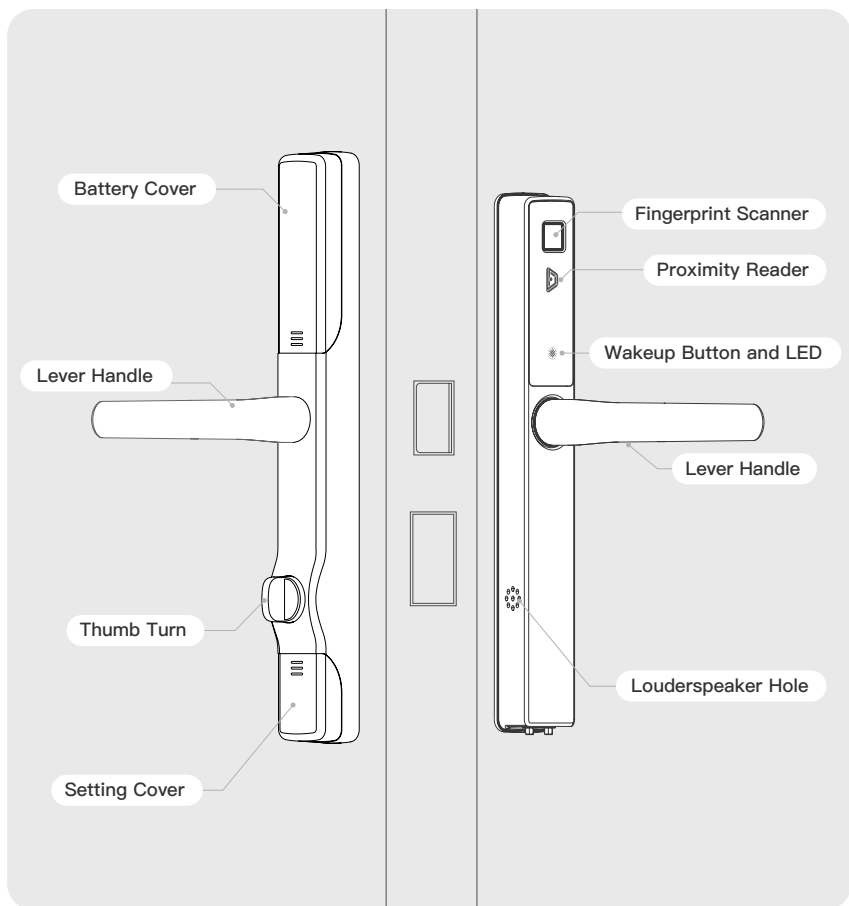
Installation

v1.0

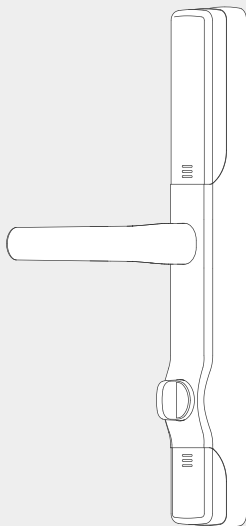




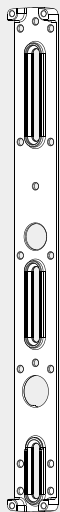
## Origin Smart Handle



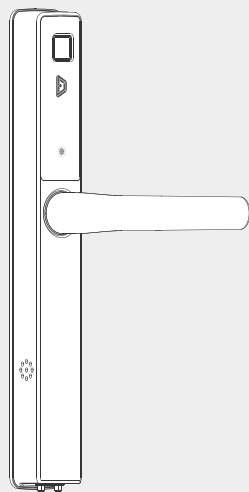
## Box Contents



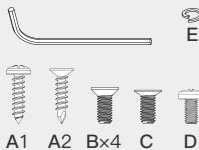
Internal Handle



Mounting Plate



External Handle



A1

A2

Bx4

C

D

E



F

G

H



J

K

L

L



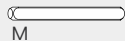
x 3



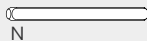
x 3



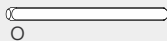
x 3



M



N



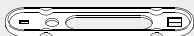
O



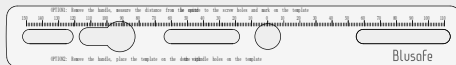
Key Card



Setting Tool



Fitting Jig



Setting Ruler

## Remove the Existing Handle & Cylinder

### Warning!



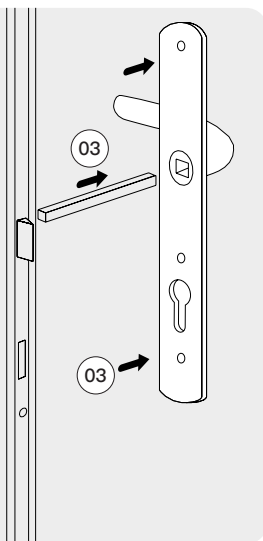
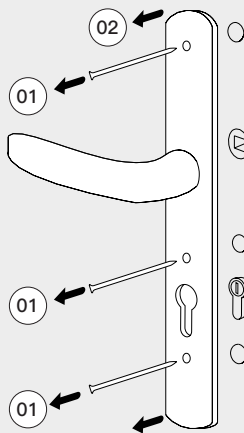
- Ensure the door is unlocked before removing the handles. Do not close the door until installation is complete.

### Put something in the bottom of the door to prevent the door closing and locking itself!

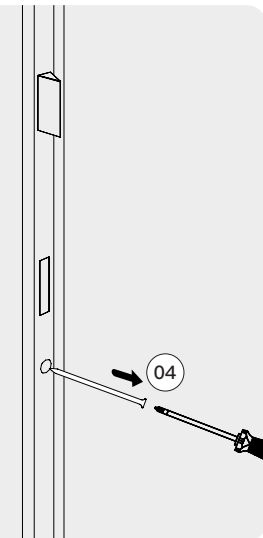
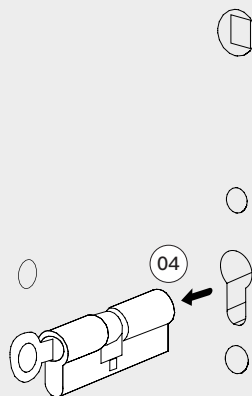
Remove the existing handles and spindle. If a turn button cylinder is fitted, remove the internal handle with the cylinder.

- ① Remove the existing screws, there may be 2 or 3;
- ② Remove the internal handle;
- ③ Remove the external handle and spindle to remove the locking cylinder;
- ④ Remove the fixing screw and turn the key/turn knob whilst putting gentle pressure on the opposite cylinder end, until the cylinder starts to withdraw. Pull the cylinder out, if there is no movement, try turning the key gently, both ways, left and right.

### Remove the Existing Handle



### Remove the Cylinder



### Tip



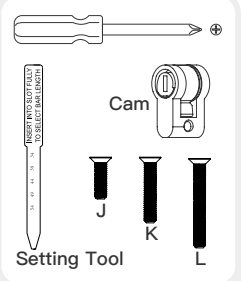
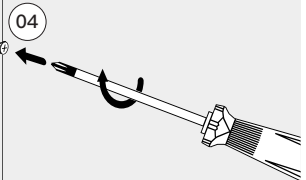
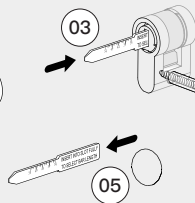
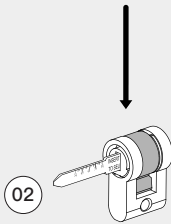
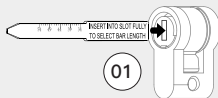
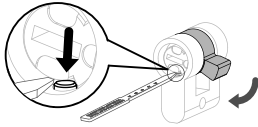
- It may be necessary to use a little force to fully remove the cylinder if it is catching on the sides of the prep hole.
- Some cylinders will only withdraw to the outside, some only to the inside, try both ways.
- If a security clamp is fitted, it will be necessary to remove this first, an Allen key will be needed to do this. Please see the FAQ section on the Blusafe website for help if you are unsure.

## Install Operating Cam

### Fix – Reset the cam

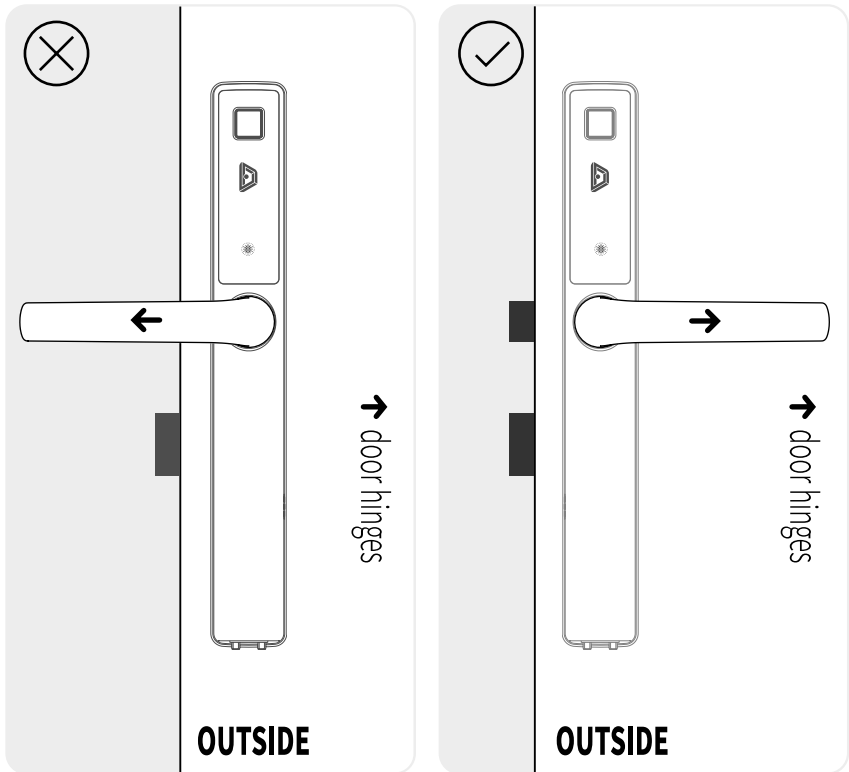


If the cam is accidentally turned, re-set it to vertical by pushing down the brass pin and turning the cam so the pin is in the central position.



- ① Insert the setting tool into the operating cam.
- ② Push the operating cam into the lock (the hole in which you removed the key/cylinder).
- ③ Fix it in place with the fixing screw shown in the diagram.
- ④ Insert the fixing screw but do not overtighten.
- ⑤ Remove the setting tool.

## Determine Handle Direction

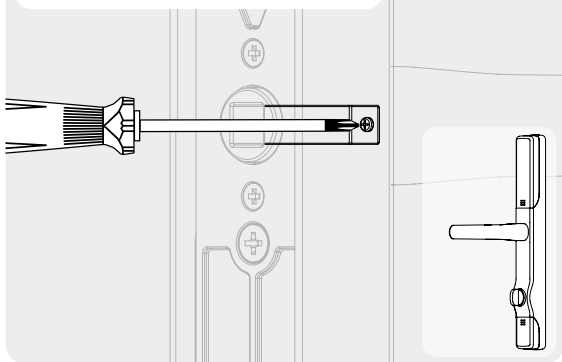


Depending on which way your door opens, determine which way the handles need to face. The handles should always point towards the door hinges. Check the Origin/Origin Smart handles against the current handles. If the handles need to face the other way, please see next page.

## Change Internal Handle Direction

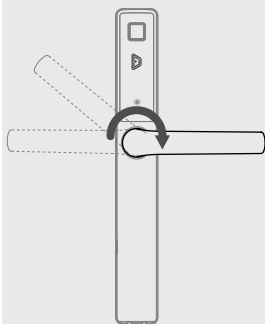
If the internal handle direction is not correct, follow the below steps to adjust.

- ① Insert your screwdriver into the inside of the handle as shown below. Push it all the way to the end to locate the screw.

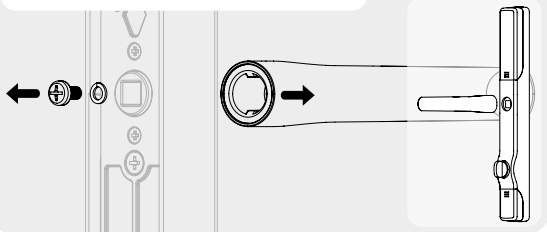


### Tip

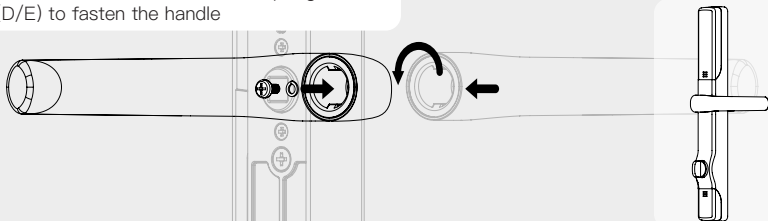
- For external handle, simply rotate the handle to the required position before inserting spindle.



- ② Unscrew the handle screw. Remove it and the spring washer and discard



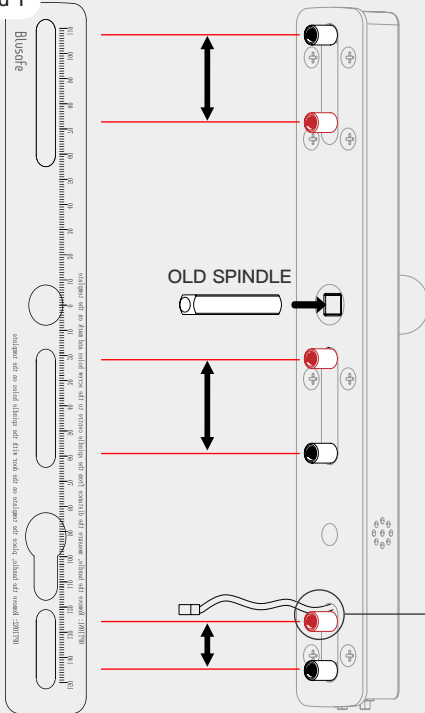
- ③ Remove the handle and rotate 180 degrees. Use the new handle screw and spring washer (D/E) to fasten the handle





## Fitting the Screw Pillars

### Method 1



Setting Ruler



Setting Tool



3 screw pillars are supplied, but generally only 2 will be required.

They can be added or removed where necessary.

The pillars can slide up or down when loosely tightened to match the current holes.

### Fitting the Screw Pillars Method 1

Measure the screw holes of the existing handle. Insert the old spindle and use the setting ruler supplied and fit the screw pillars in the correct positions.

#### Important!



- Ensure the bottom pillar is below the electrical contact wire.

### Alternative



#### Method 2

Use the old internal handle and spindle, join together with the Origin/Origin Smart outer handle.

Fix the screw pillars loosely – in line with the old handle screw ports.

Using the old handle screws, pass them through the old handle into the screw pillars and turn to locate, then gently tighten the pillars with fingers.

Remove the screws, old handle and spindle and fully tighten the pillars with the setting tool.

#### Important!




- Ensure you fully tighten the screw pillars with the setting tool or flat head screwdriver.

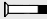
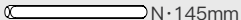
## Measure Your Door Thickness

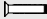

Please measure the total thickness of your door. Select the spindle and fixing screw pack as shown below.



### Door thickness

44–50mm  48mm×3  
 M·130mm

58–65mm  60mm×3  
 N·145mm

68–75mm  70mm×3  
 O·155mm

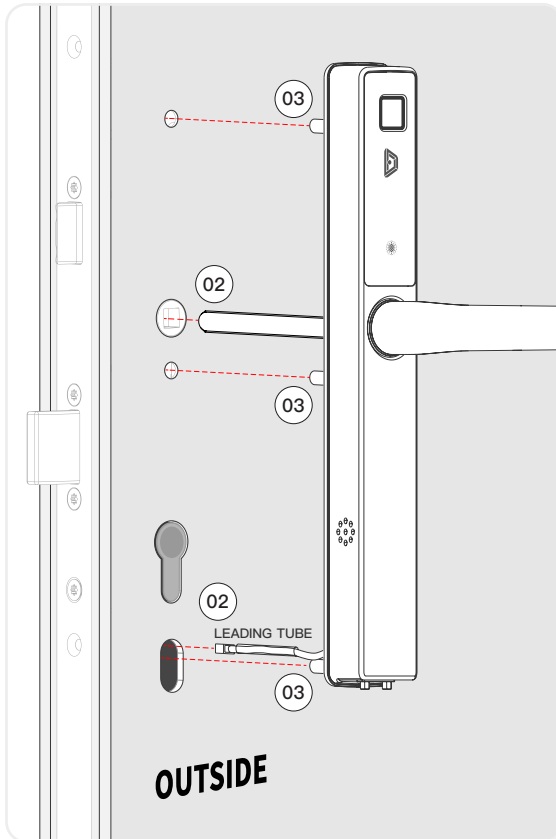
Before fitting the handle assembly, please ensure that the internal and external handle, backplate, spindle and fixing screws are removed from the packaging and within easy reach.

### Warning!



- Please make sure the main door lock is in the unlocked position. If unsure, use the old handle and spindle and push the handle down before proceeding.

## Install External Handle



- ① Fit the spindle into the external handle.
- ② From the outside face of the door, take the leading tube and put it over the cable connector head, then feed the cable through the bottom fixing hole as shown. UPVC doors will have 2 internal walls to pass the cable through as well as the outer and inner walls. Push the spindle all the way through.
- ③ Make sure the screw pillars pass through the middle of the holes in the door.

Gently pull the connector cable with leading tube through if necessary and check it's not caught or trapped, as this could damage the cable. Remove leading tube from the cable. Hold the external handle in place and fit the mounting plate (see next page).

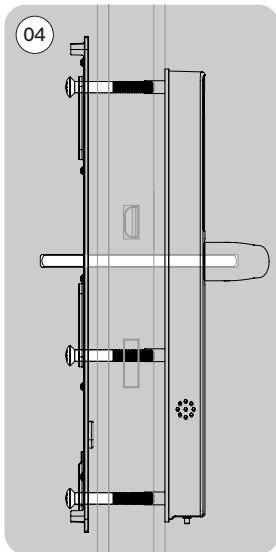
### NOTE



- Please note, you may need to increase the size of the bottom fixing hole to allow both the cable and screw to pass through. Please see FAQ's on Blusafe website.

## Install Internal Mounting Plate

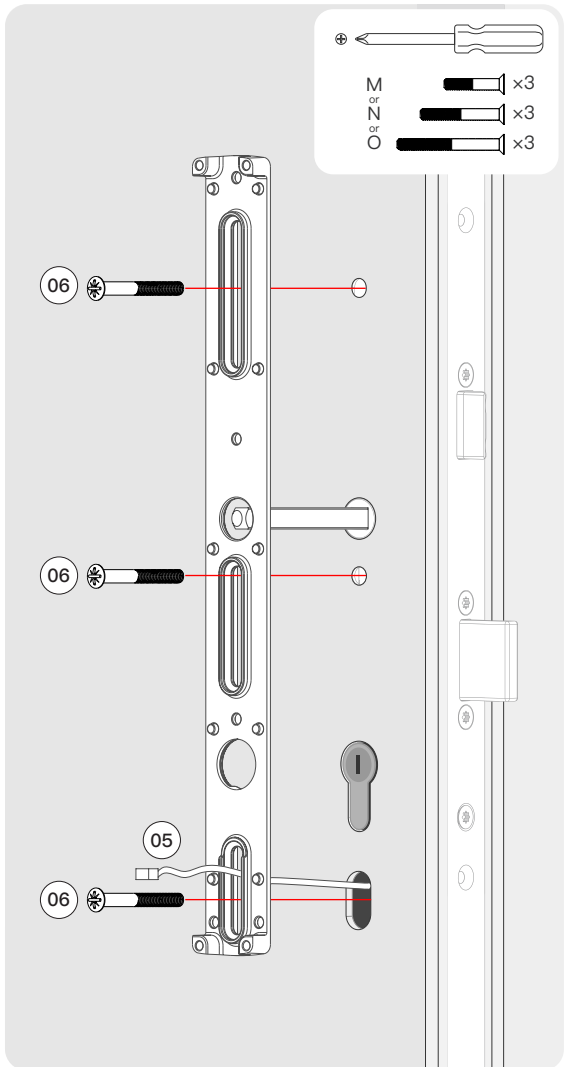
- ④ Ensure the mounting plate is in the correct orientation with the rubber pad against the door face (see diagram).
- ⑤ Feed the electrical connector and cable through the bottom slot, you may need help to do this as you will be holding the outer handle in position at the same time.
- ⑥ Push through and loosely tighten the fixing screws into the screw pillars on the outer handle. Check the mounting plate is firmly against the door face. Remember, there may only be 2 screws not 3.



### Warning!

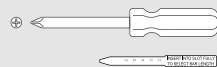
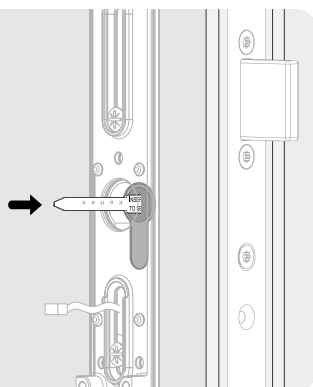


- DO NOT fully tighten the fixing screws.



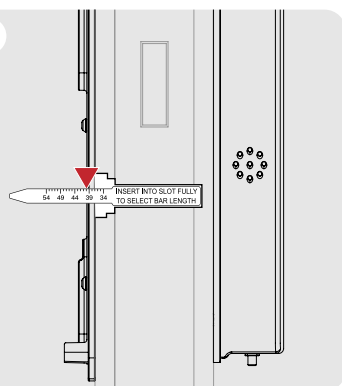
## Fit the Drive Bar

fig.1



Push the setting tool fully into the slot in the operating cam (see fig.1).

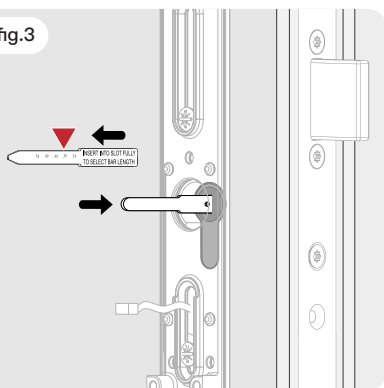
fig.2



The mark nearest to the face of the backplate shows the correct bar length to use (see fig.2).

Withdraw the setting tool making sure the slot in the cam is in the vertical position.

fig.3



Select the correct length drive bar shown by the setting tool.

Then, wider square end in first, push the bar firmly into the slot until it hits the bottom of the slot.

Reading on Setting Tool (mm)	Bar NO	Bar Length (mm)
34 – 39	G1	35
39 – 47	G2	42.5
47 – 51	G3	50

## Use Fitting Jig to Align

### Important!



- Ensure the drive bar is vertical.  
Refer to page 2 to re-set the cam if required.

- ⑦ Slide the black plastic fitting jig over the spindle as shown and check that the drive bar is located correctly in the slot.

Move the internal mounting plate slightly if required until the jig is fully located.

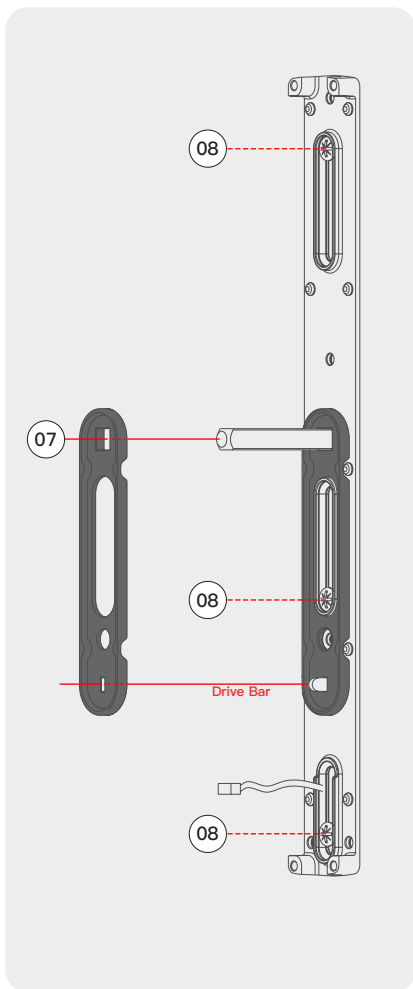
- ⑧ Tighten up the fixing screws firmly but do not over tighten.

Remove the fitting jig. Make sure the spindle and drive bar are in the centre of their holes respectively.

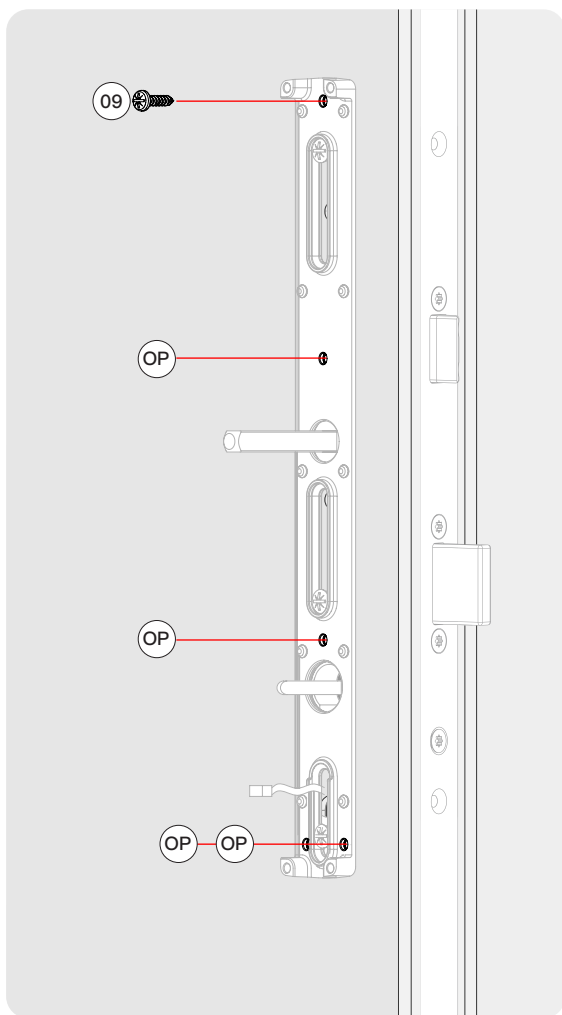
### Important!



The jig **MUST** be used.



## Fix the Mounting Plate



- ⑨ If the top of the backplate is not flush with the face of the door, fit the additional self-tapping screw A1 supplied.

Some composite doors have steel skins so it may be necessary to use a powered driver with a self-drilling screw A2 (supplied).

Please be careful to tighten by hand to avoid stripping the door skin.

Other optional (OP) fixing points are available if required (screws not provided).

### Note



- Screw A1 is a self-tapping screw.
- Screw A2 is a self-drilling screw.

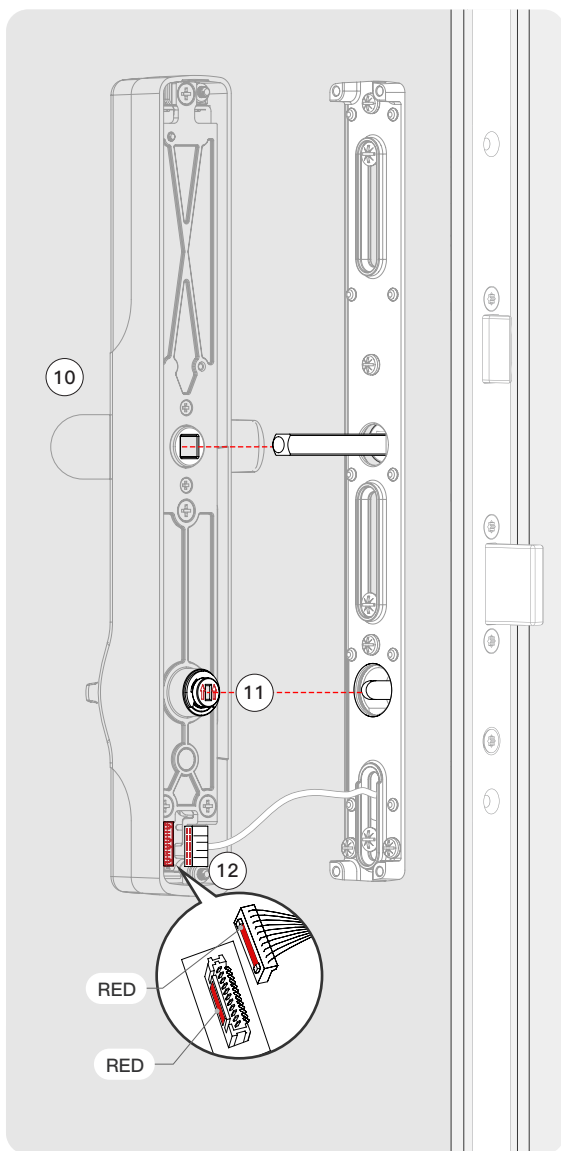
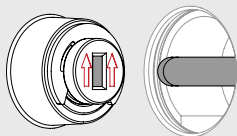
## Fitting the Internal Handle

- ⑩ Check that the handle is facing the correct way (see page 3).
- ⑪ Check the alignment arrows on the turn cylinder are facing straight up as shown below.
- ⑫ Carefully connect the connector to the handle as shown, red side to red side.

### Important!

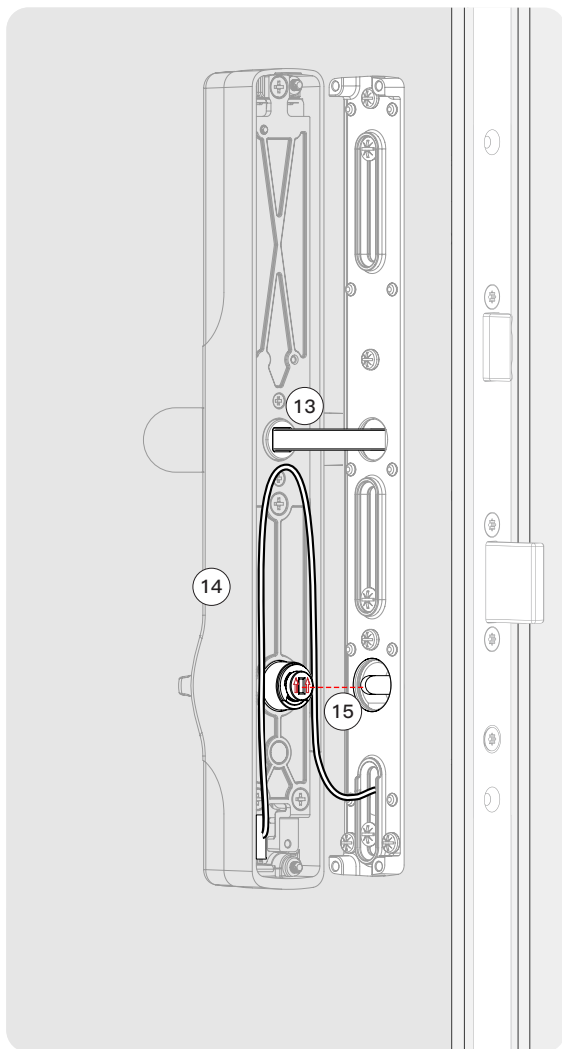


- Make sure the drive bar is vertical and the cam slot arrows are vertical before fitting.





## Fitting the Internal Handle



- 13 Locate the handle onto the spindle.
- 14 Push the handle in slowly ensuring that the cable goes around the thumb turn as shown in the diagram.
- 15 Check that the drive bar is fitting into the slot in the thumb turn cylinder and push the handle fully home.

Finally, double check that the handle is seated correctly on the backplate and that the cable is not visible (not caught under the edge of the handle).

### Important!



- Please make sure cable is tucked into allocated slot when fitting handle.

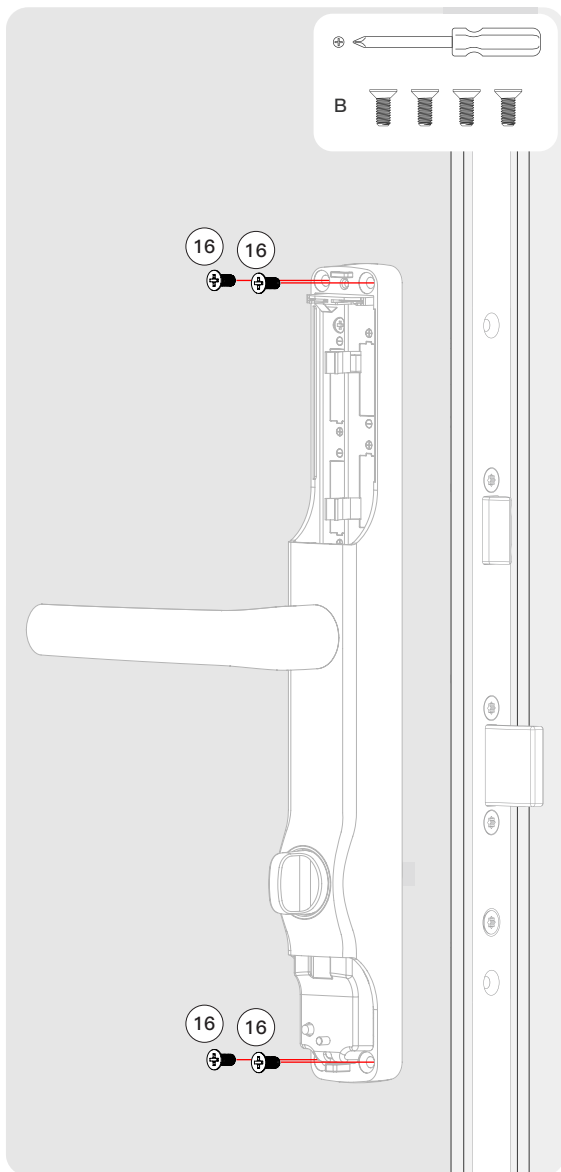
## Fitting the Internal Handle

- 16 Fit the 4 fixing screws supplied manually (do not use a power screw driver). Do not over tighten the screws.

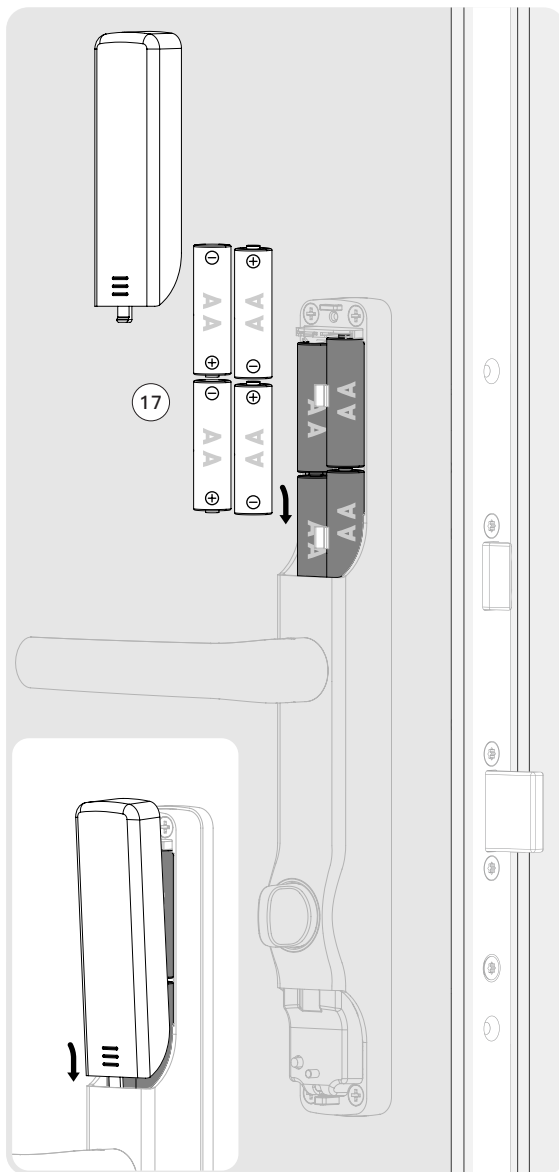
### Warning!



- DO NOT push down or lift the handle at this stage.



## Internal Handle Set Up



- ⑰ Please insert the 4 AA batteries supplied with the handle and fit the cover.

You will hear a 'beep' to confirm that the batteries are correctly fitted.

You will be instructed to 'PLEASE PUSH THE LEVER HANDLE DOWN'. Once done, you will be instructed to 'PLEASE LIFT THE LEVER HANDLE'.

You should hear the motor turn and then hear 'DOOR IS LOCKING'.

Try to push the handle down. If the handle has been correctly fitted, the handle should not push down.

### Warning!



- Do NOT turn the thumb turn until the above sequence has been completed.

### Important!



- The batteries will work in the handle for 8 months depending upon usage and environment. It is recommended to change the batteries every 6 months for optimal performance.
- When the batteries are running low, you will hear a 'Low Battery' warning upon each use of the handle. You will have approximately 50 warnings before the battery runs out.

## Check Thumb Turn

Check the operation of the internal thumb turn.

- 18 To unlock the door from the inside, press the thumb turn slightly and it will drop into a slot, push firmly and turn the thumb turn.

Turn clockwise if the handle is on the left side of the door.

Turn anti-clockwise if the handle is on the right side of the door.

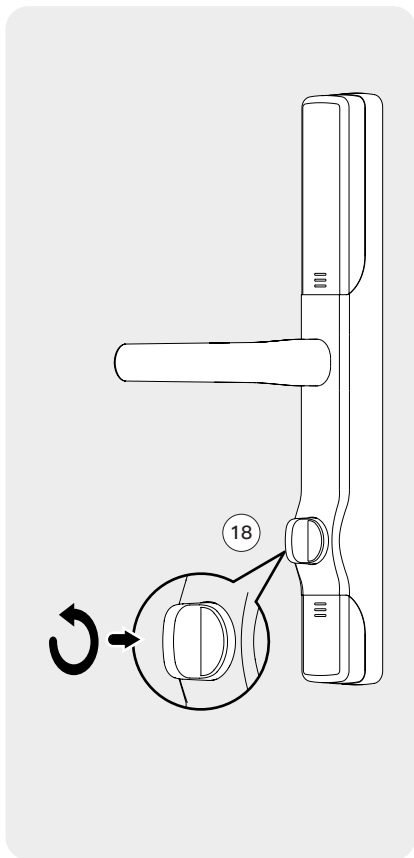
You will hear and feel a click, now push the handle down.

Once you are happy that the thumb turn is operating easily and isn't stiff or sticking, you can tighten up the cam fixing screw (Page 2). Be careful not to tighten too much and still leave a small amount of slack. Once tightened, lift the handle to lock the door, then unlock via the thumb turn. Make sure that this is still operating easily and freely. To set up the handle please do not fit the bottom cover yet.

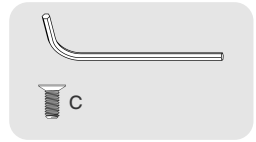
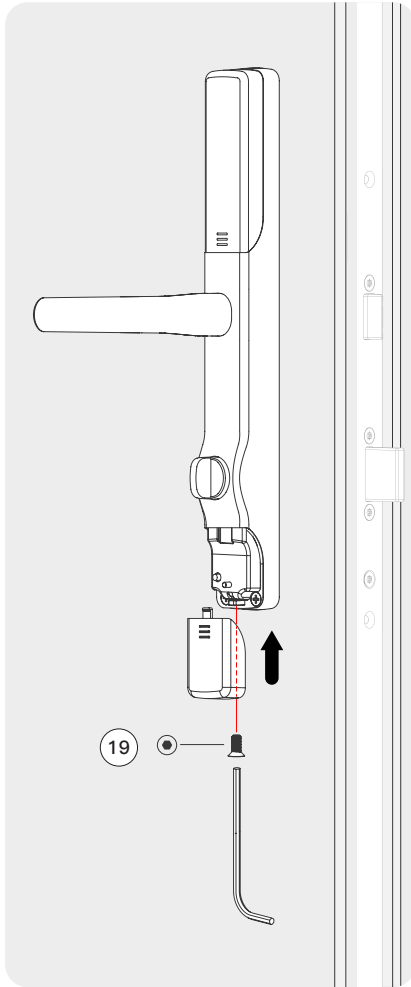
### Fix



- If the thumb turn is sticking or is stiff to operate, the cam fixing screw may be too tight. Undo the screw by 1 turn and try again.
- If after this it is still sticking, please refer to the FAQs on the website to see how to fix this.



## Fit the Setting Cover



We recommend you use the App to set up the handle, please refer to the User Manual to do this.

You may also set up and use the handle manually (without the App). Please refer to the User Manual for details.

- 19 Once setup is complete, simply fit the cover to the bottom of the handle and secure with the screw provided (C).

This is a security screw for child safety, the allen key needed is supplied in the box.

### Important!



- Please keep this allen key in case the cover needs to be removed in the future.

Security at your fingertips — Blusafe



